

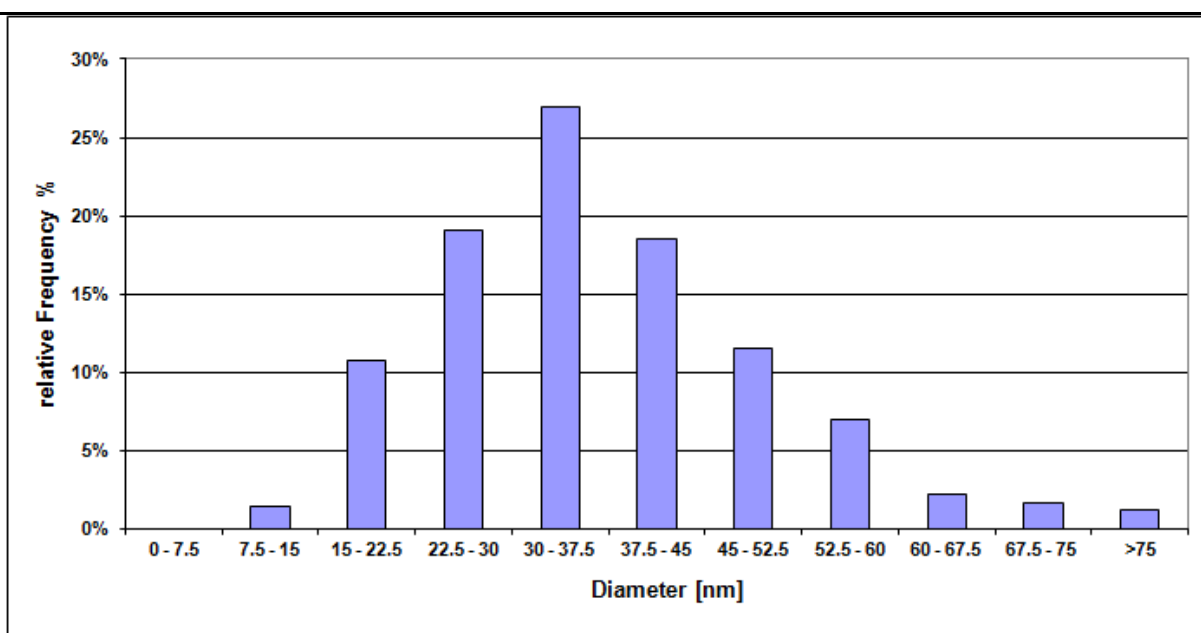


NanOxiMet

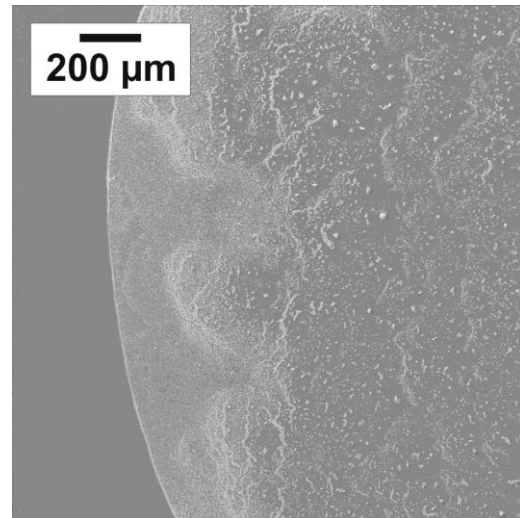
Primary Particle Size Analysis (SEM)

Material	Ag20-30
Date	2015/01/13
Particle Morphology	Nearly spherical to cubical
Mean Diameter (nm)	37.0 nm \pm 13.0 nm
Mode Diameter (nm)	31.5 nm
Sigma (fit)	$\sigma = 1.42$
Comments	The observed particles and agglomerates /aggregates dried out in cluster within the drying area on the substrate. Some parts dried out in wave-like structures at the border of the drying area.
Short description	Ag20-30 consists of compact, near-spherical to elongated particles with a mean diameter of approximately 37 nm. The particles tend to form compact agglomerates/aggregates.

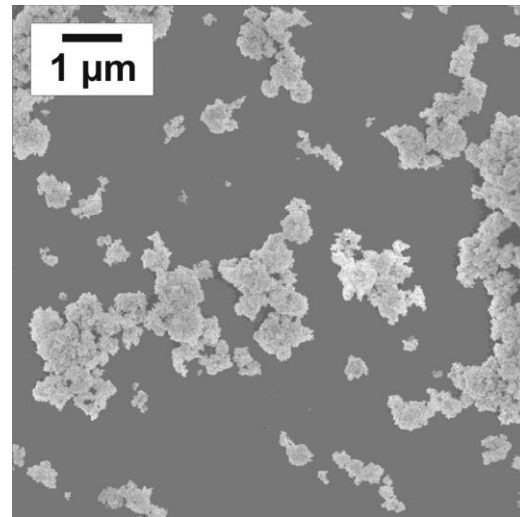
Histogram



SEM Image (low magnification)



SEM Image (medium magnification)



SEM Image (high magnification)

