

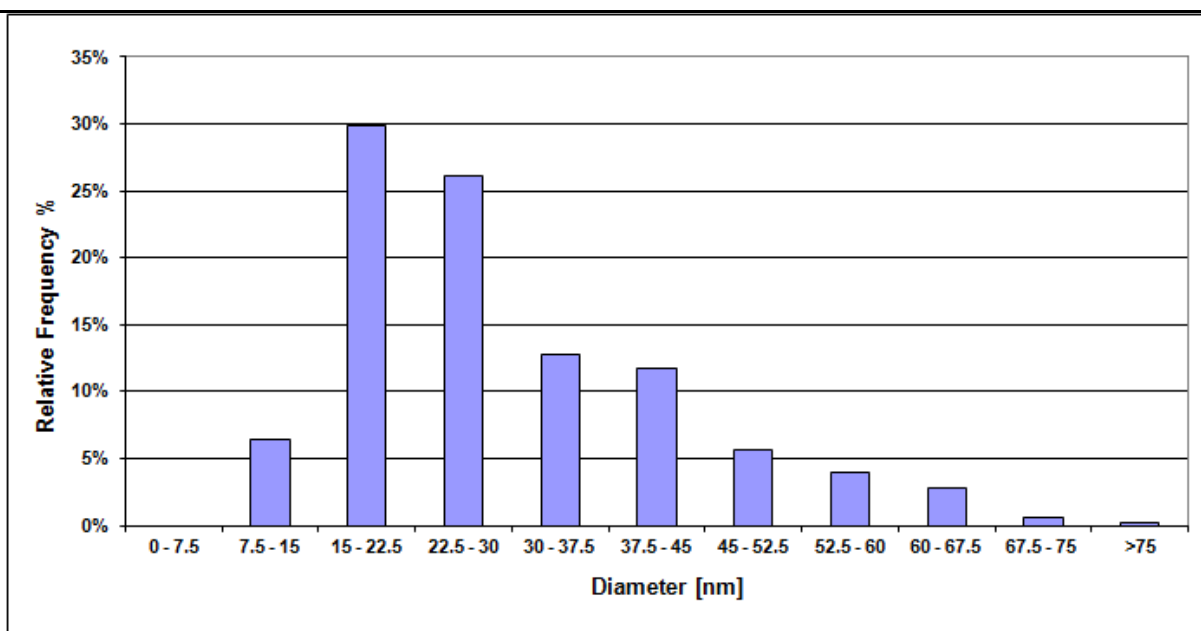


NanOxiMet

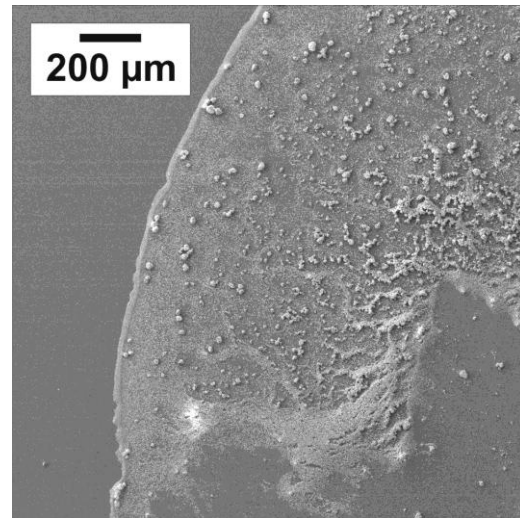
Primary Particle Size Analysis (SEM)

Material	NM101
Date	2015/01/12
Particle Morphology	Nearly spherical
Mean Diameter (nm)	29.9 nm \pm 13.1 nm
Mode Diameter (nm)	21.5 nm
Sigma (fit)	$\sigma = 1.46$
Comments	The observed particles and agglomerates /aggregates are dispersed but concentrated in one area of the drying area on the substrate.
Short description	NM 101 consists mainly of near-spherical particles with a mean diameter of 30 nm. The particles tend to form very compact agglomerates/aggregates.

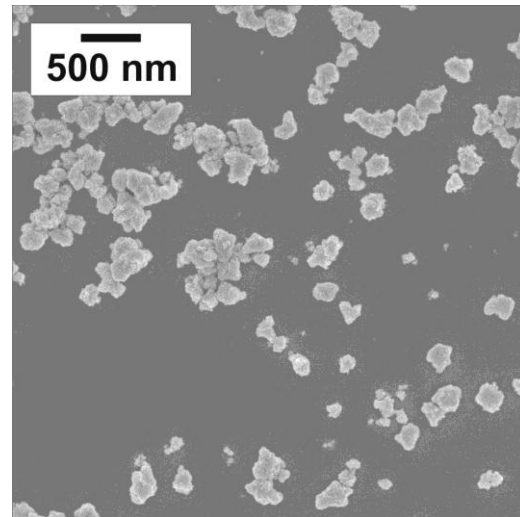
Histogram



SEM Image (low magnification)



SEM Image (medium magnification)



SEM Image (high magnification)

