

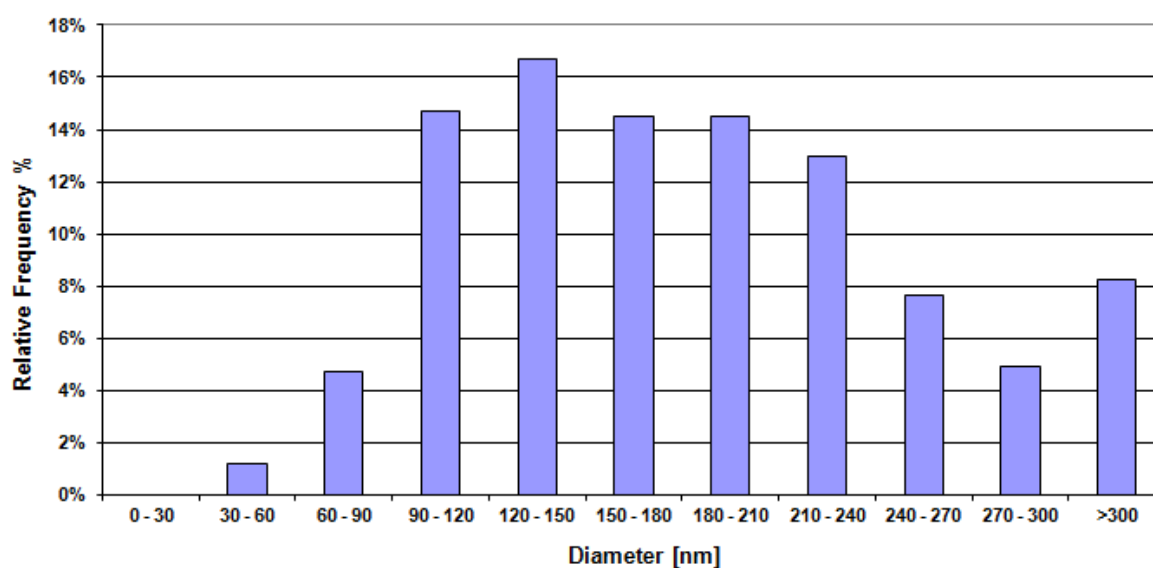


NanOxiMet

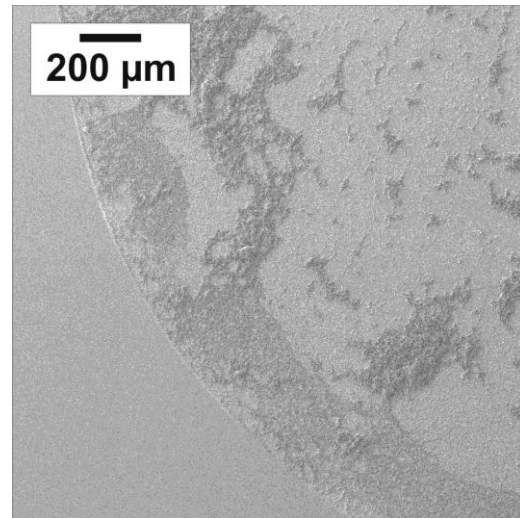
Primary Particle Size Analysis (SEM)

Material	LB101
Date	2016/03/30
Particle Morphology	Nearly spherical, heavily sintered
Mean Diameter (nm)	188.2 nm \pm 80.4 nm
Mode Diameter (nm)	145.9 nm
Sigma (fit)	$\sigma = 1.58$
Comments	The observed particles and agglomerates /aggregates mainly dried out in cluster within the drying area on the substrate. Single Aggregates are also found.
Short description	LB101 consists of compact, near-spherical particles with a mean diameter of approximately 190 nm. The particles are heavily sintered and tend to form compact aggregates.

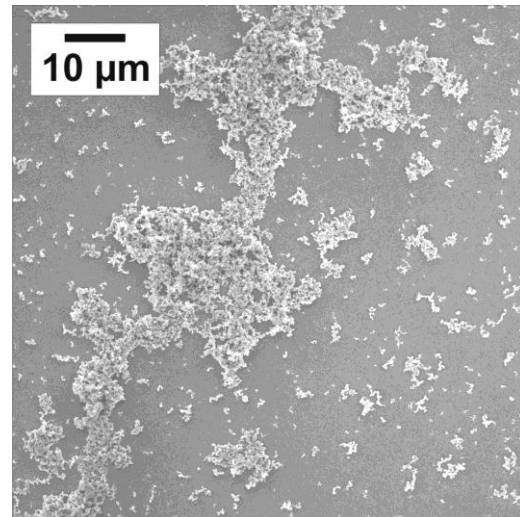
Histogram



SEM Image (low magnification)



SEM Image (medium magnification)



SEM Image (high magnification)

